

Business Traveler



LUXE LIFE
**High style
in the air**

TRAVEL
**Plush guest
ranches in the
American West**

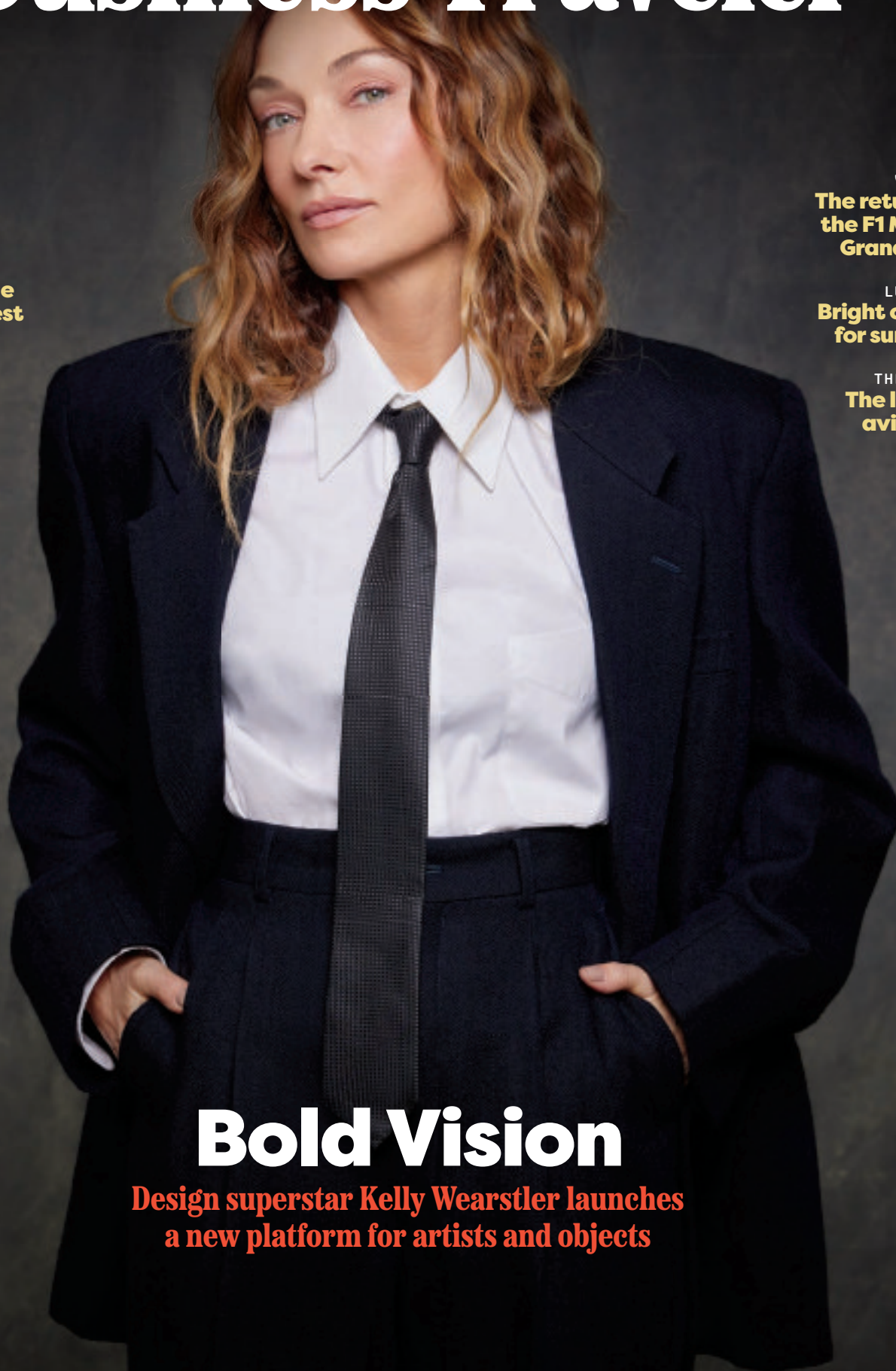
SPORT
**Golfing
across
Ireland**



VRROOM!
**The return of
the F1 Miami
Grand Prix**

LUGGAGE
**Bright colors
for summer**

THE BUZZ
**The latest
aviation
news**



Bold Vision

**Design superstar Kelly Wearstler launches
a new platform for artists and objects**



By Sahar Khan

Bright Ideas

PEOPLE, DESTINATIONS AND TRENDS INFLUENCING THE CULTURE

EXTRA DAY

London

> **KNOWN FOR ITS** iconic monuments, tantalizing history, multicultural populace and ever-evolving creative scene, London continues to captivate. The city has seen it all across 2,000 years, including centuries of royal intrigue. While the dramas today are more innocuous than decrees of “off with his head,” this month the British capital looks to bury all strife as it celebrates King Charles III’s coronation with pomp and pageantry. In between the parades, concerts and street parties, take time to explore these new additions to the city’s continuously unfolding delights.

MARK PAREN TAYLOR



The National Gallery

● The latest exhibit at The National Gallery examines how three giants of impressionism influenced the generations after them. “After Impressionism” juxtaposes works by Gauguin, van Gogh and Cézanne with pieces by younger artists they inspired. One-hundred artworks from 1880 to WWI survey the period’s innovative ideas that laid the foundations for 20th-century works. Through August 13. nationalgallery.org.uk

Sessions Arts Club

● A blazing fire, artfully peeling plaster and contemporary art: This 18th-century courthouse-turned-restaurant in Clerkenwell induces enchantment. Chef Florence Knight’s Pan-European menu pares back ingredients to highlight their singular tastes and showcase her deft touch. Case in point: Juicy lamb cooked in champagne melds well with the accompanying celeriac’s nutty savor. Topping the roster of desserts is a ginger cake. sessionsartsclub.com

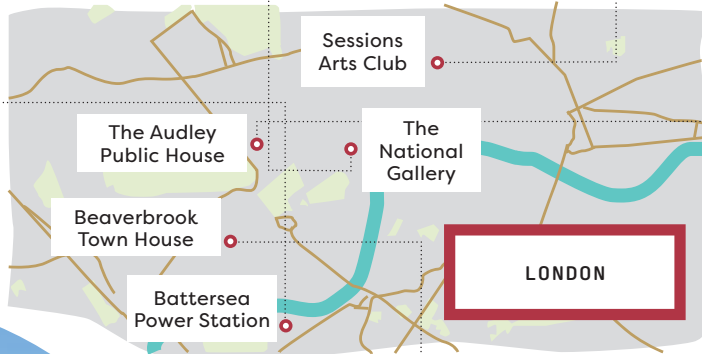


The Audley Public House

● Step into Victorian England at the newest venture from Hauser & Wirth. The Mayfair establishment’s handsome interiors, comprised of brown leather booths and dark wood panels, embody a members club, while a kaleidoscopic ceiling and neon artwork recall a cool gallery. Elevated pub fare does classics right—think crispy Cornish haddock with thick chips. theaudleypublichouse.com

Battersea Power Station

● At its peak, Battersea Power Station provided a fifth of London’s power. After sitting shut for 40 years, the behemoth was transformed into the city’s newest hotspot. More than 100 shops offer both high-end and high-street brands, and eateries include gourmet dining and elevated fast food. batterseapowerstation.co.uk



Beaverbrook Town House

● The 14 rooms and suites at this Chelsea hotel are inspired by London’s storied theaters. They unfurl like stage sets fitted with canopied beds and chintz pillows, while emerald bathrooms create a sensual escape. At the hotel’s on-site restaurant, The Fuji Grill, chef Jan Horak creates an omakase menu. Diners at the counter have front-row seats to Horak’s mastery as he sears sashimi with a blowtorch. beaverbrooktownhouse.co.uk



TOP LEFT: © NATIONAL GALLERY; LONDON; TOP RIGHT: COURTESY OF SESSIONS ARTS CLUB; BOTTOM LEFT: BRENDAN BELL; CENTER RIGHT: COURTESY OF THE AUDLEY PUBLIC HOUSE; PHOTO BY SIM CANETTY-CLARKE; BOTTOM RIGHT: COURTESY OF BEAVERBROOK TOWN HOUSE